



# Publishing a Map to the CartoVista Server

CartoVista 5.6

Last Update: July 6, 2017

[cartovista.com](http://cartovista.com)

# About CartoVista



**CartoVista** makes it possible to create detailed analyses and optimized communications by putting data on a map. With innovative solutions, **CartoVista** solves business problems and enables communication in a wide range of industries.

The company's head office is located at:  
37 St-Joseph Boulevard, 2nd floor  
Gatineau (Québec)  
J8Y 3V8  
Canada

For more information on our products and professional services, please visit our [website](http://www.cartovista.com) (www.cartovista.com).

## Technical Support

If you encounter problems working with **CartoVista**, our technical support experts can help. Technical support includes referrals to documentation, assistance with error messages and suggestions for causes of error messages.

Technical Support is available in North America Monday - Friday from 8:00 am - 4:00 pm EST, excluding holidays. Please remember to include your serial number or contract number when contacting technical support.

Toll-free (North America): 1.866.772.2660  
Phone: 1.819.772.2000  
Fax: 1.819.772.2001  
Email: [support@cartovista.com](mailto:support@cartovista.com)

## Copyrights

**CartoVista** is a registered trademark of **CartoVista** inc. The **CartoVista** software, including all related files and documentation is protected by copyright.

## Terms of use

Please refer to the **End User License Agreement** [CartoVista Server](https://cartovista.com/eula/cartovista-server-end-user-license-agreement) (https://cartovista.com/eula/cartovista-server-end-user-license-agreement) for more information on the terms of use of the software.

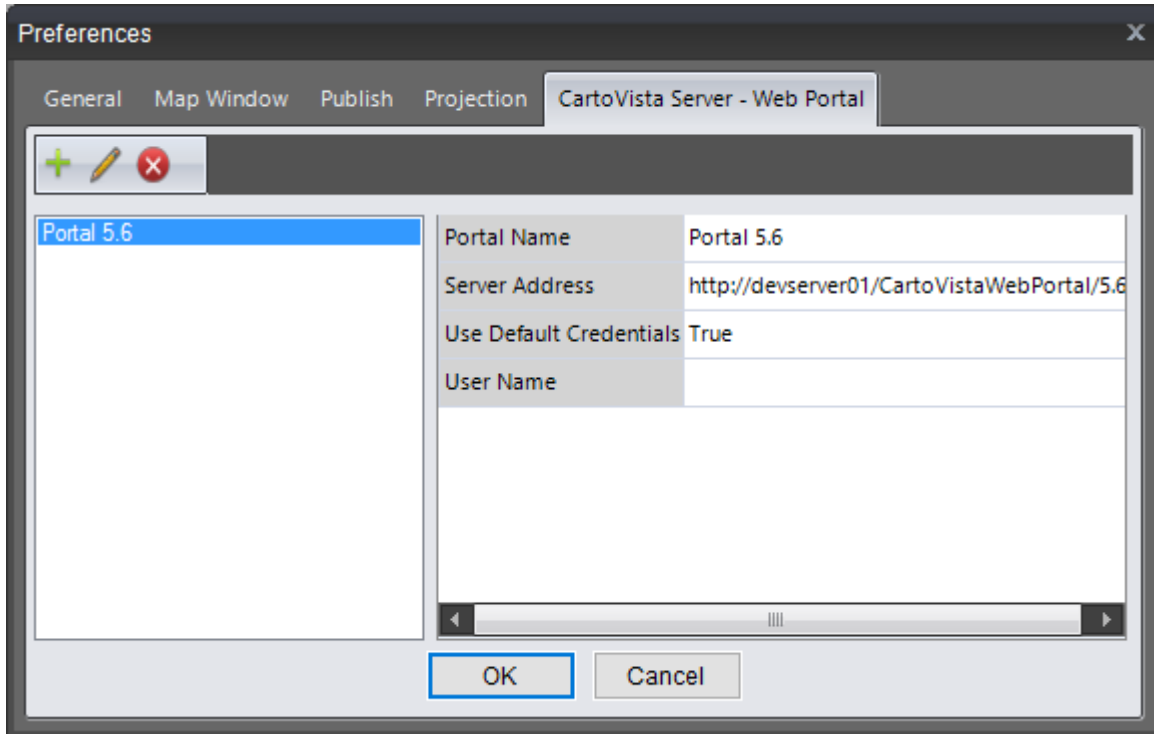
# CONTENTS

<a href="#">Publishing a Map to the CartoVista Server</a> .....	1
Add your Server to the Preferences Window.....	1
Select your Server in the Publish Options .....	2
Add New Map to the CartoVista Server .....	3
Modify a Map.....	4

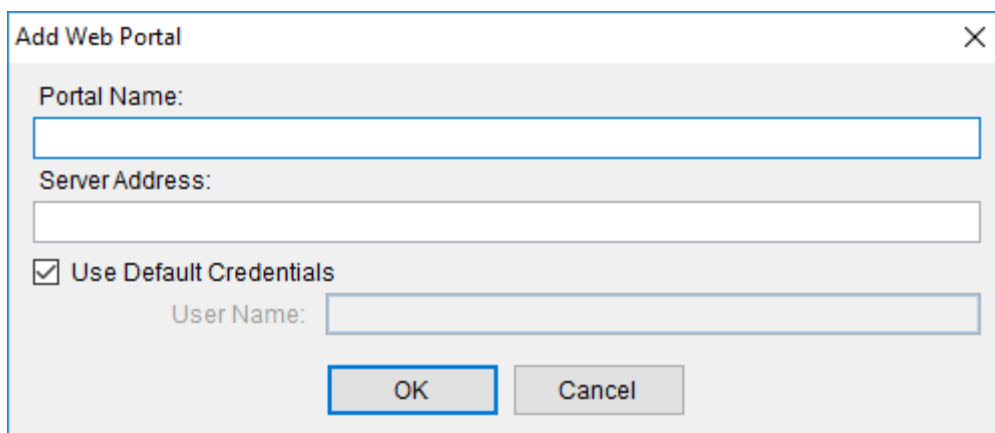
# Publishing a Map to the CartoVista Server

## Add your Server to the Preferences Window

To publish a map window to the **CartoVista Server** from the **CartoVista Publisher**, you must add your server to the **CartoVista Server - Web Portal** tab of the **Tools > Preferences** window.

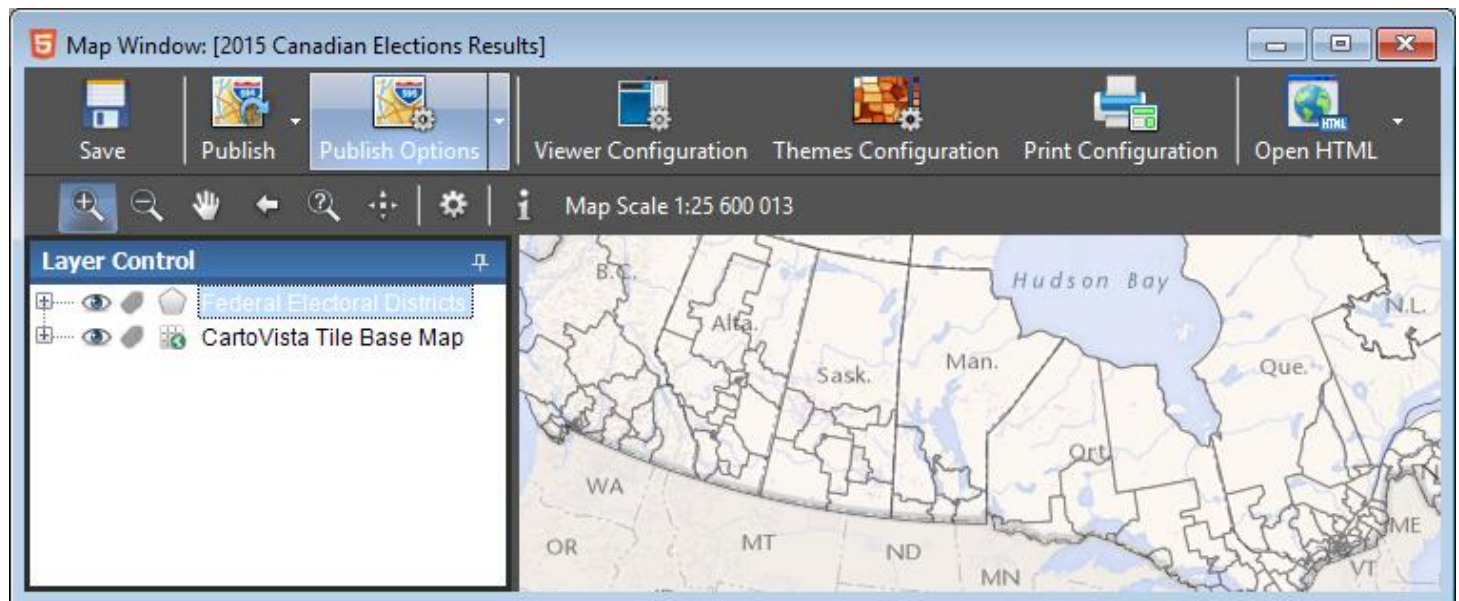


Click on the + button to enter the information about your **CartoVista Server**.

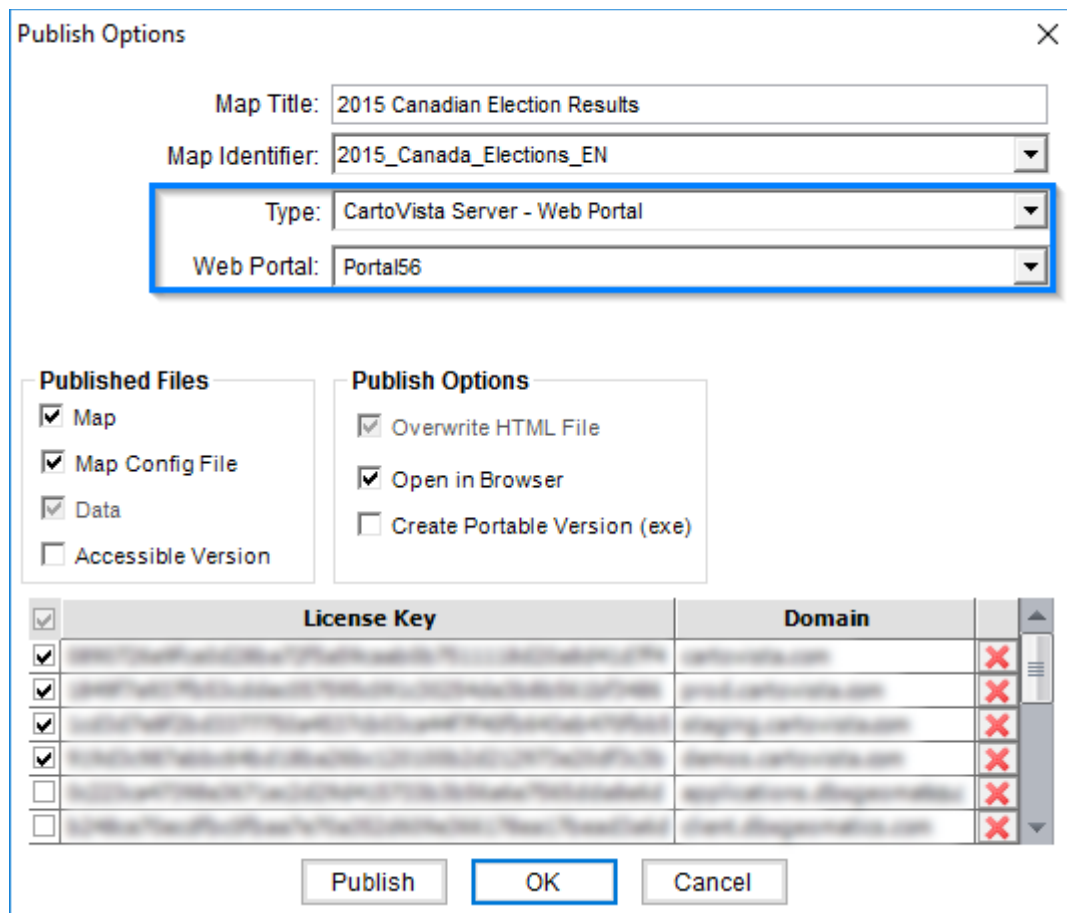


# Select your Server in the Publish Options

From the map window, click on the **Publish Options** button.



Select **CartoVista Server - Web Portal** from the **Type** option and select the **Web Portal** name.



The map will be sent to the **CartoVista Server** the next time you **Publish** the map.

# Add New Map to the CartoVista Server

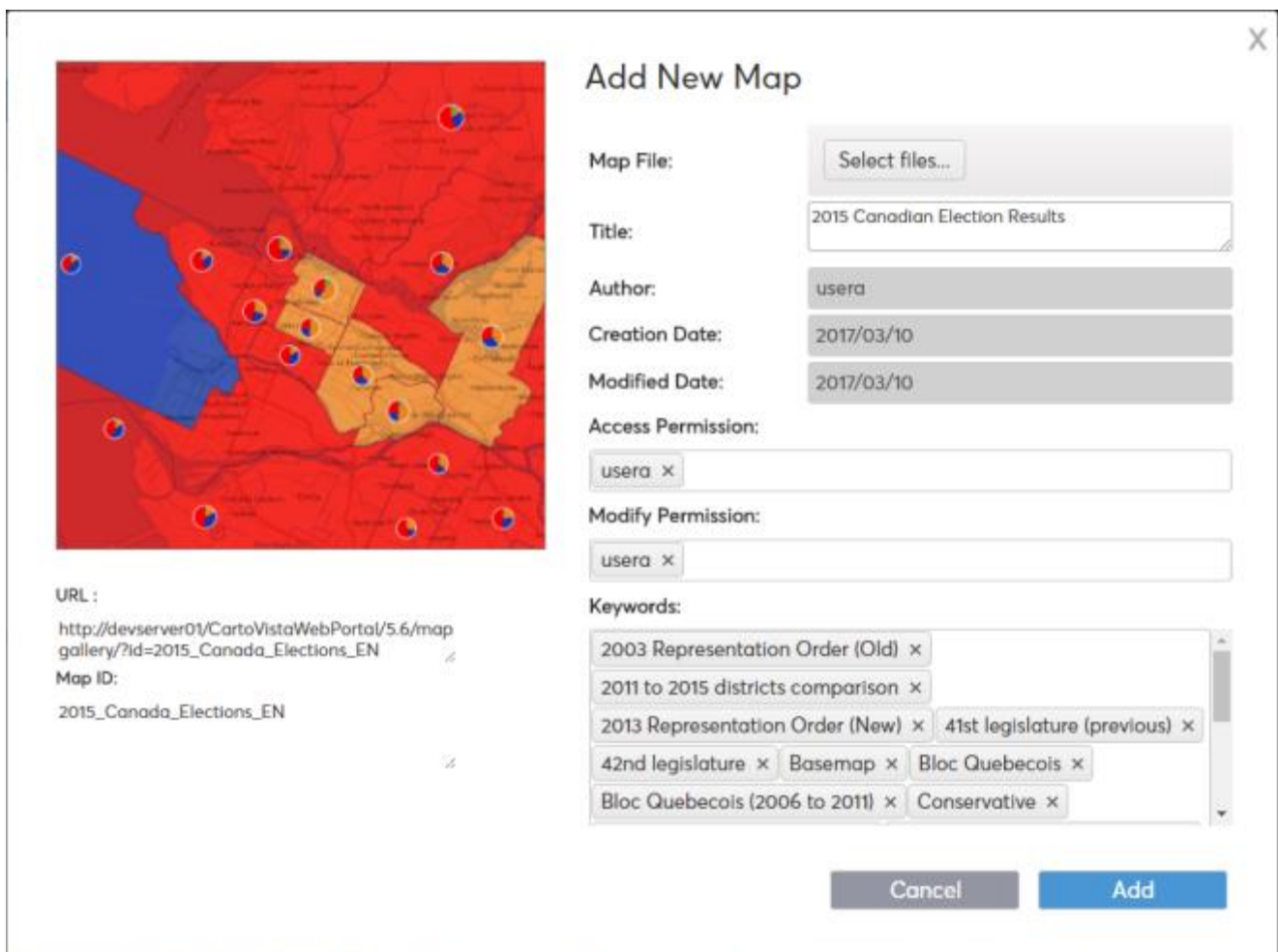
Once the map is sent to the [CartoVista Server](#), the **Add New Map** window opens in your default web browser. The following settings are automatically filled in:

1. **Author:** Name of the user who added the map to the [CartoVista Server](#) first.
2. **Creation Date:** Date of the addition of the map on the [CartoVista Server](#).
3. **Modified Date:** Date of the last replacement of the map on the [CartoVista Server](#).
4. **URL:** Direct link to view the map in the [CartoVista Viewer](#) interface.
5. **Map ID:** Map identifier created by default when adding the map from the [CartoVista Server](#), or determined by the author of the map when adding the map from the [CartoVista Publisher](#).

You can modify the following settings:

1. **Title:** The map title defined in the [CartoVista Publisher](#) can be changed in the [CartoVista Server](#).
2. **Access Permission:** You can give an access permission to multiple users and groups.
3. **Modify Permission:** You can give a modify permission to multiple users and groups.
4. **Keywords:** A list of keywords is automatically created from the name of layers, the theme sets and thematic data of the map. You can modify this list by adding or removing keywords.

Click the **Add** button to confirm the addition of this map to the [CartoVista Server](#).



**Add New Map**

Map File:

Title:

Author:

Creation Date:

Modified Date:

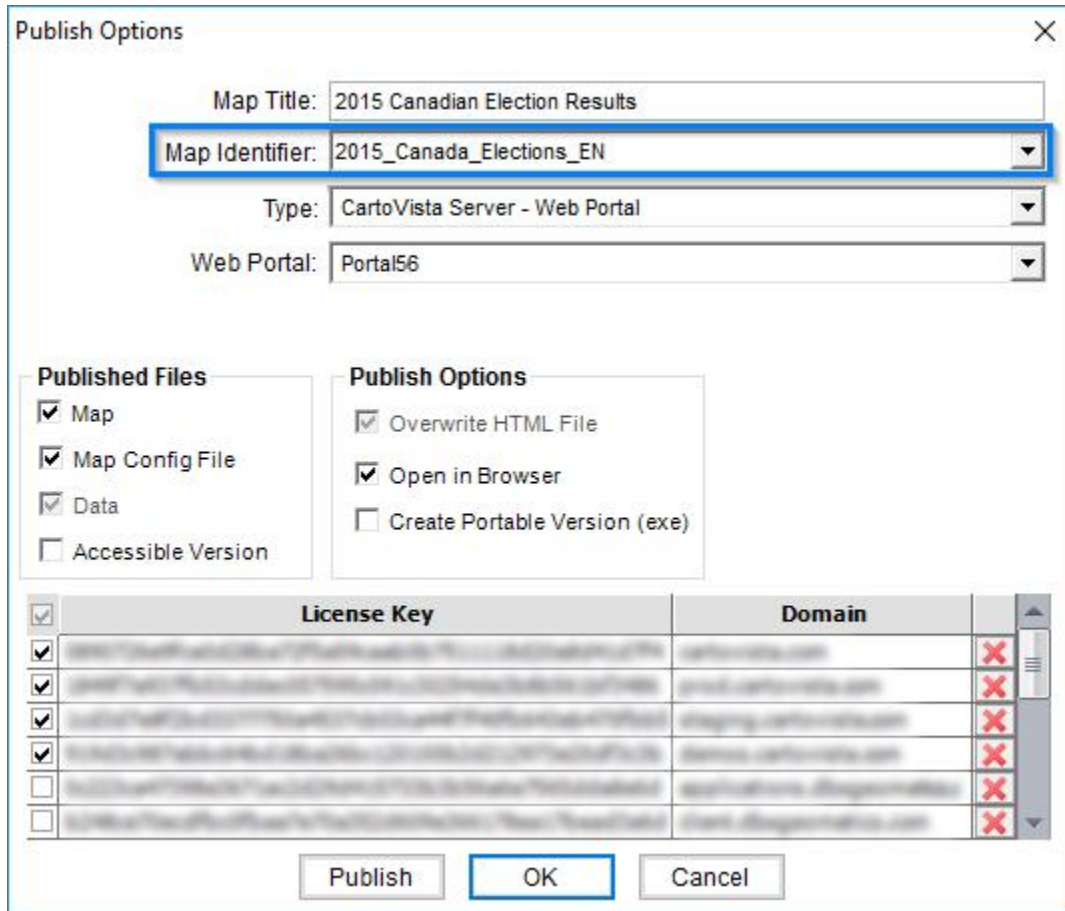
Access Permission:

Modify Permission:

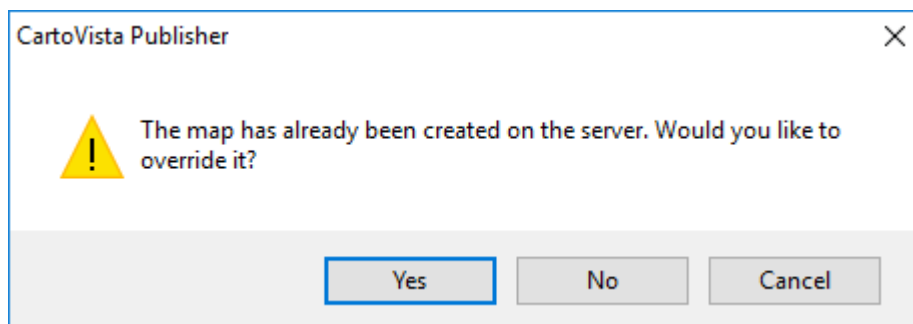
Keywords:

# Modify a Map

After editing the map in the [CartoVista Publisher](#), you can publish it again to replace it on the [CartoVista Server](#), as long as you use the same **Map Identifier**.



When you click **Publish**, the following warning message is displayed:



If you click **Yes**, the **Modify a Map** window is displayed in the [CartoVista Server](#). Click **Modify** to confirm the map replacement.

