



June 6, 2016

TECHNICAL HELP

CartoVista Deployment

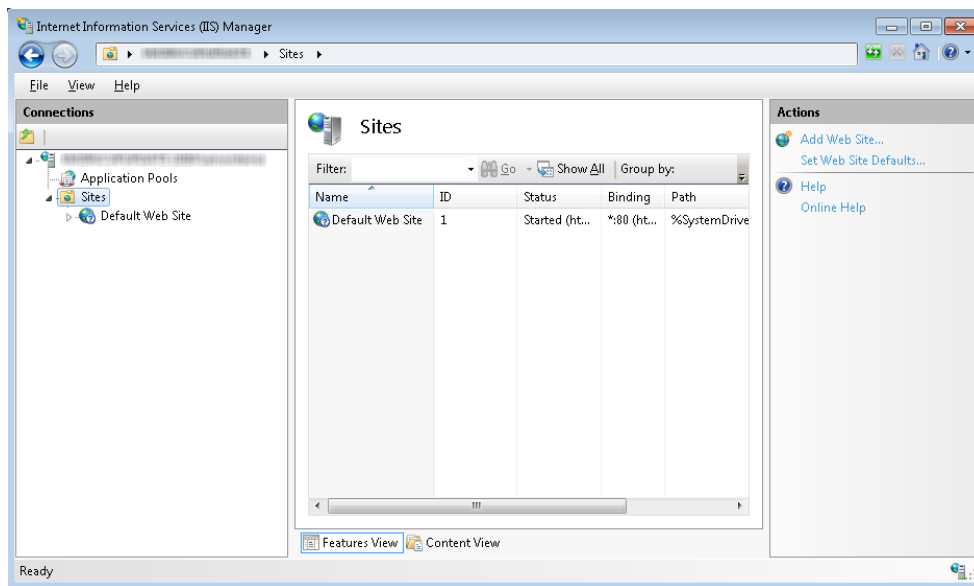
Deploying a CartoVista Map (HTML) to IIS

cartovista.com

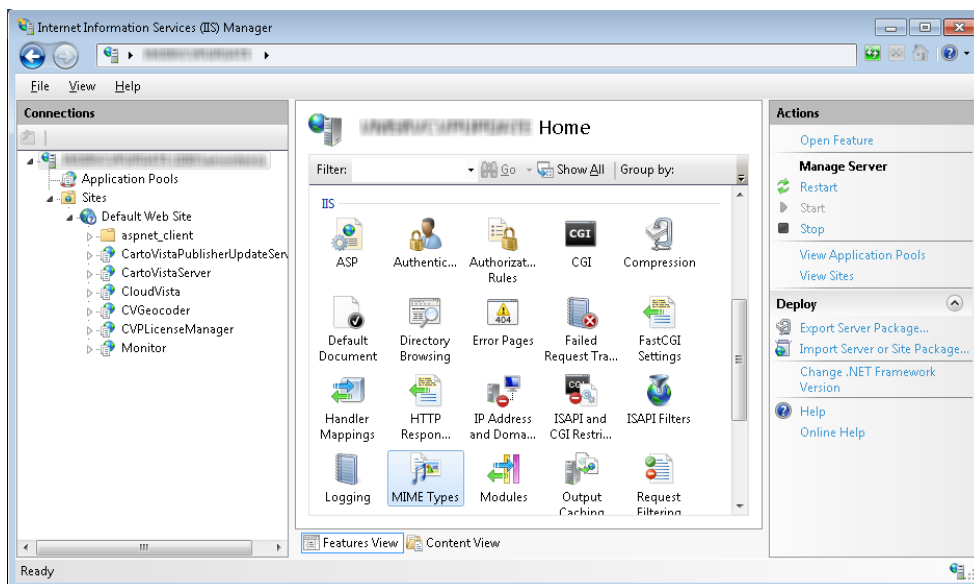
Deploying a CartoVista Map to IIS

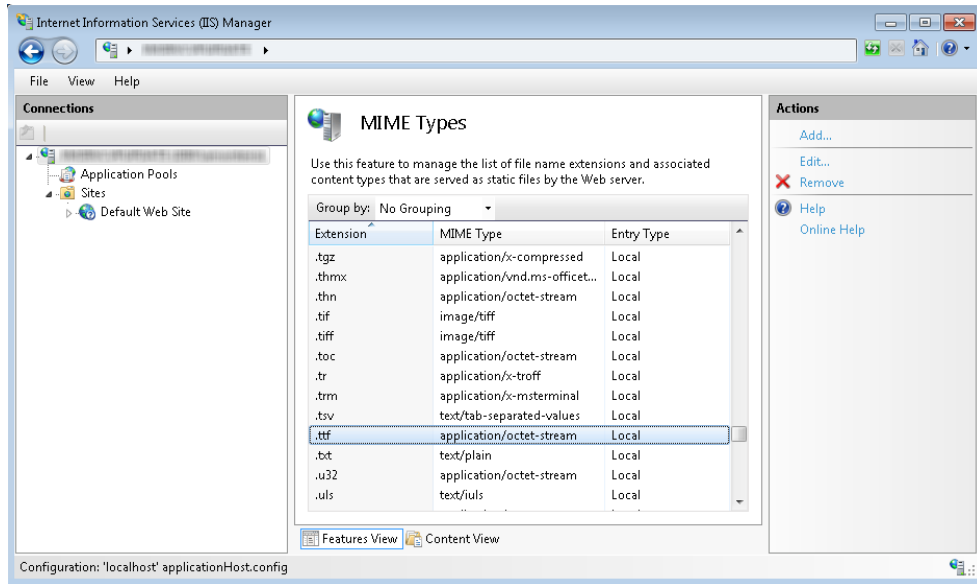
This document contains the instructions on deploying a CartoVista map to Microsoft's Internet Information Server (IIS).

1. Within IIS, create a new website, or add a new virtual directory to an existing website.



2. Copy the contents of the .ZIP file that was provided to the *physical path* created in step #1.
3. Ensure MIME Types are correctly configured on IIS.

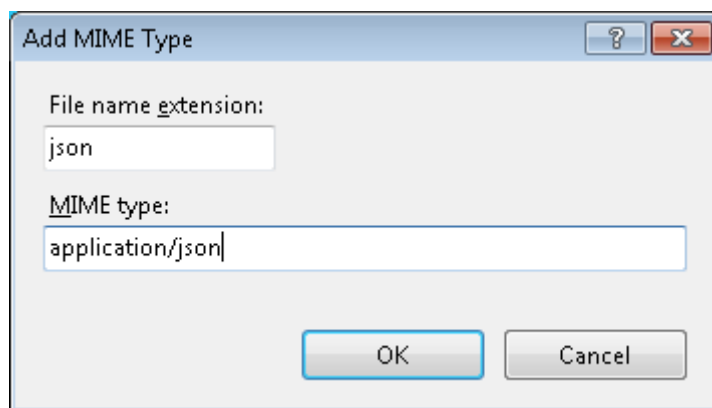




CartoVista requires the following three MIME Types configured as follows:

File Name Extension	MIME Type
json	application/json
woff	application/font-woff
tff	application/octet-stream

Use the Add option from the Actions Pane to add a new MIME Type if it does not already exist.



Use the Edit option from the Actions Pane to correct an existing entry.

License Keys

The license key is normally embedded in the configuration file delivered as part of the .ZIP file. The license key is dependent on the **Host Name** of the website that was previously communicated to CartoVista.

If you change the Host Name, deploy the map to multiple internal hosts, or deploy the map to a website with a different Host Name, you will have to obtain a new license key from CartoVista. To obtain a new license key, please send the Host Name to support@cartovista.com.

If you receive a new license key from CartoVista, it will be in the format of:

```
<LicenseKey domain="HOSTNAME ">LICENSEKEY</LicenseKey>
```

The line will need to be added to the map configuration file found in the *map* directory of your website. The map configuration file will be named <mapname>config.XML. Insert the new license key element provided into the <LicenseKeys> element of the XML file.

Final Note

CartoVista is a client side solution (JavaScript, CSS, HTML).

There are no additional “server components” or software to deploy.

